

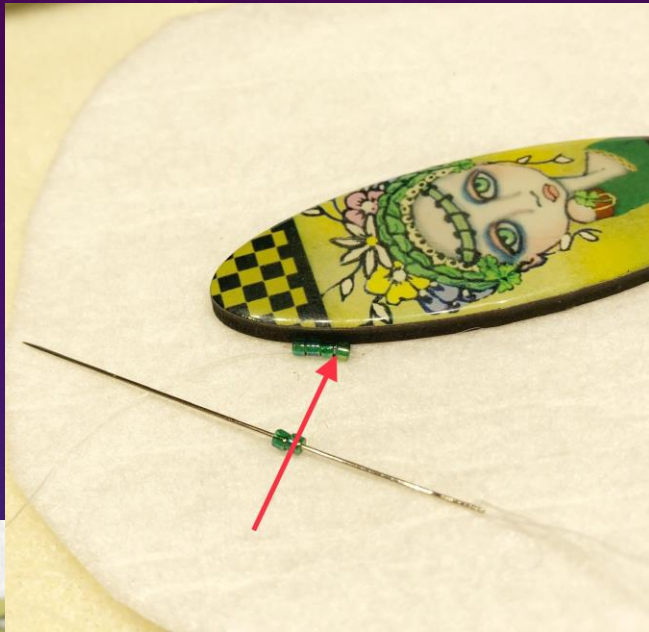
The background is a dark blue gradient with faint technical diagrams. On the left, a large circular scale is visible, with markings from 140 to 260 in increments of 10. Several circular diagrams with arrows and dashed lines are scattered across the background, suggesting a technical or engineering theme.

THE BEZEL

A BEADED BEZEL: SURROUNDING
THE EDGES OF A CABOCHON

THE BASIC BEAD EMBROIDERED BEZEL



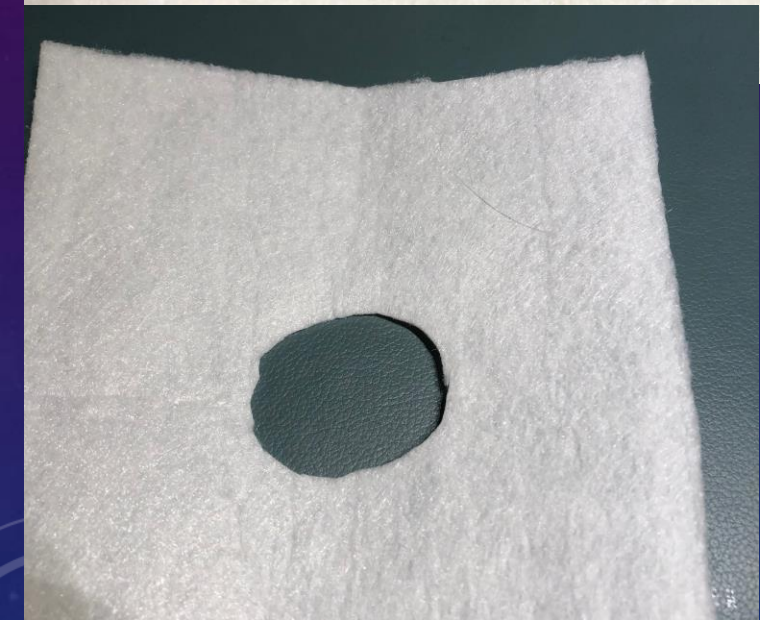








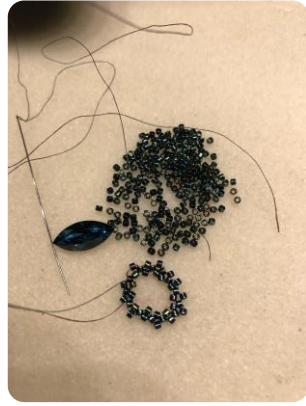








BEZEL WITH
OVERLAPPING
HERRINGBONE STRIPS



BEZEL STARTED WITH
RIGHT ANGLE WEAVE
(RAW) STRIP

BEZEL WITH RAW STRIP
THAT'S EMBELLISHED
BEFORE ATTACHING TO
CABOCHON



Trigon Necklace

© Melissa Grakowsky Shippee



Create this three-sided bauble using a unique combination of right angle weave, peyote stitch, and netting, then hang it from a tubular herringbone neckstrap for a show stopping but wearable work of beaded art!



BEZEL STARTED WITH A CUBIC RIGHT ANGLE WEAVE STRIP (CRAW)

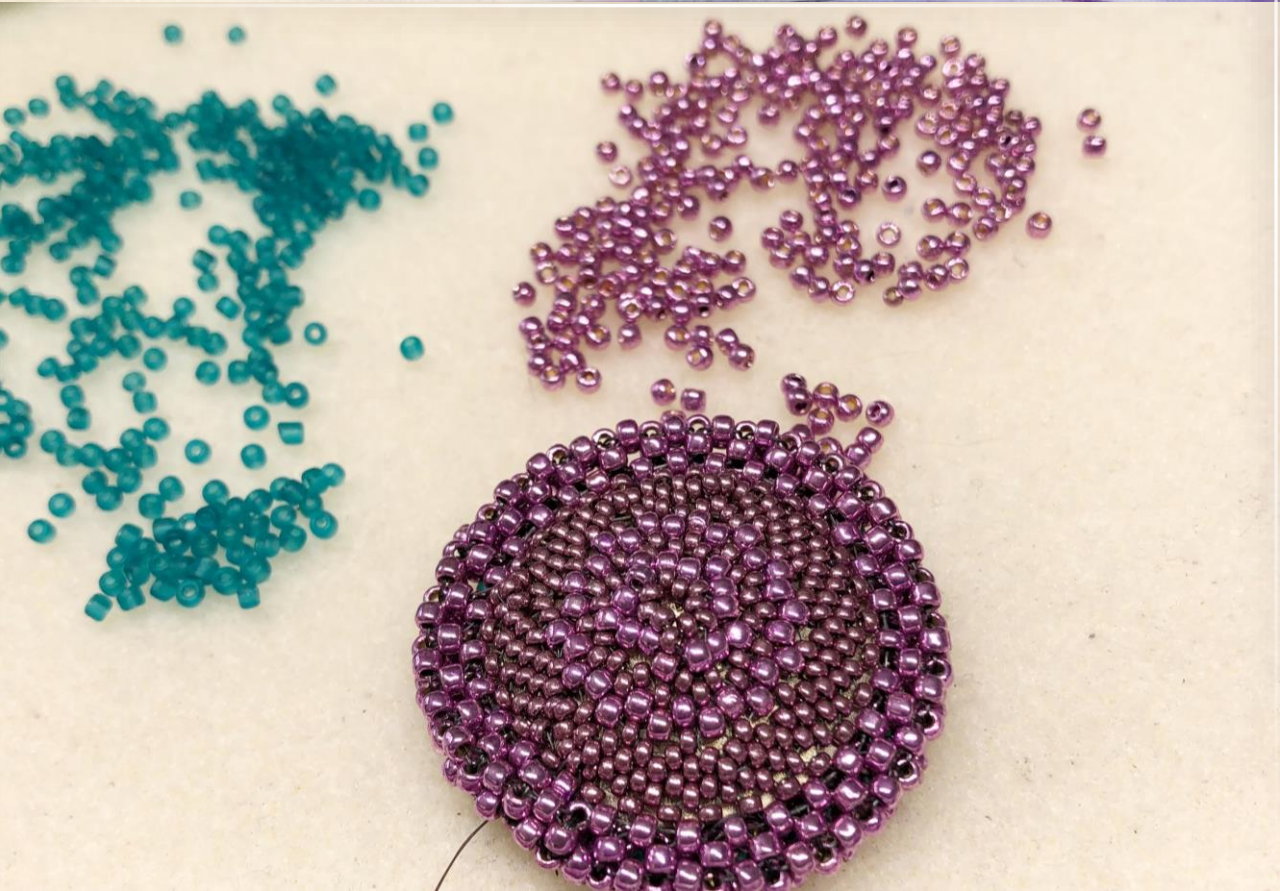
Join the strip into a circle

Add 15s to one edge

Insert the stone

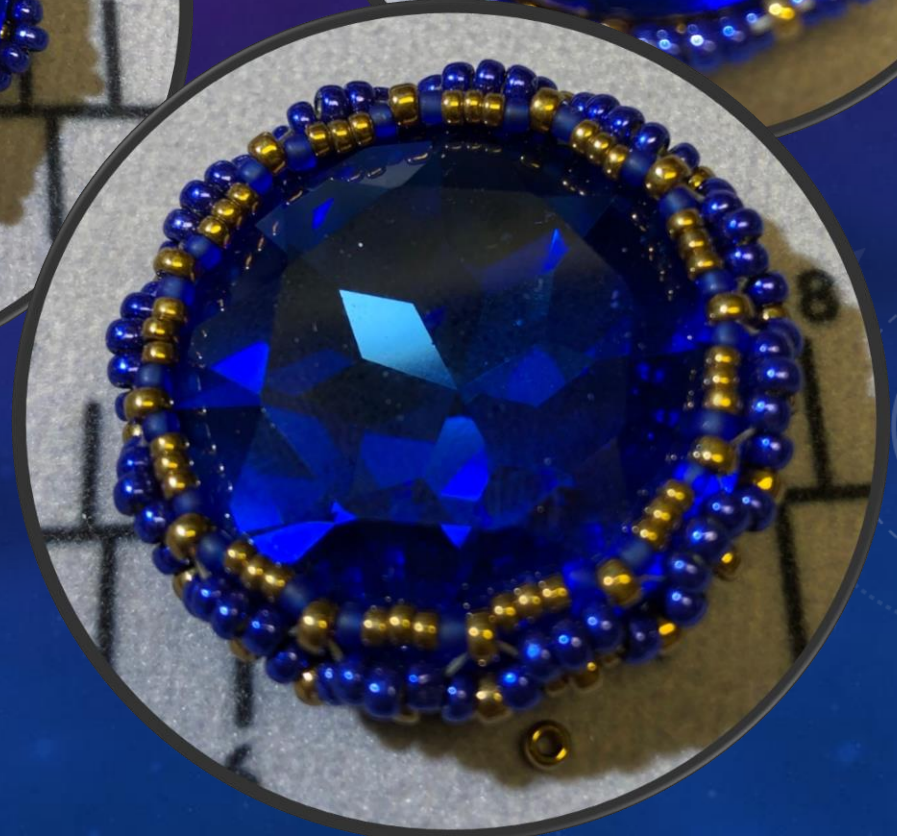
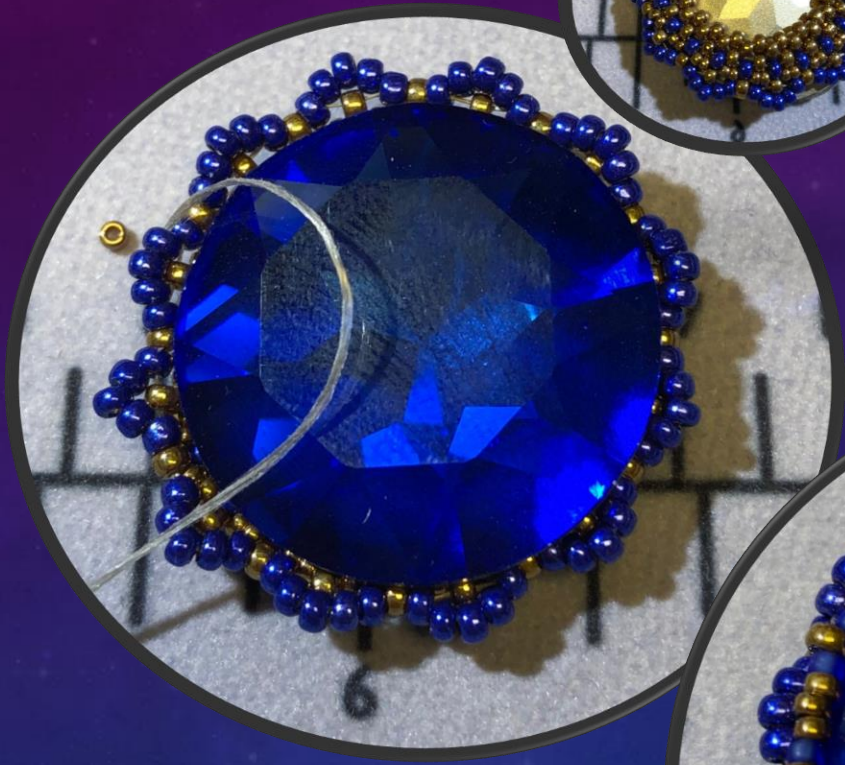
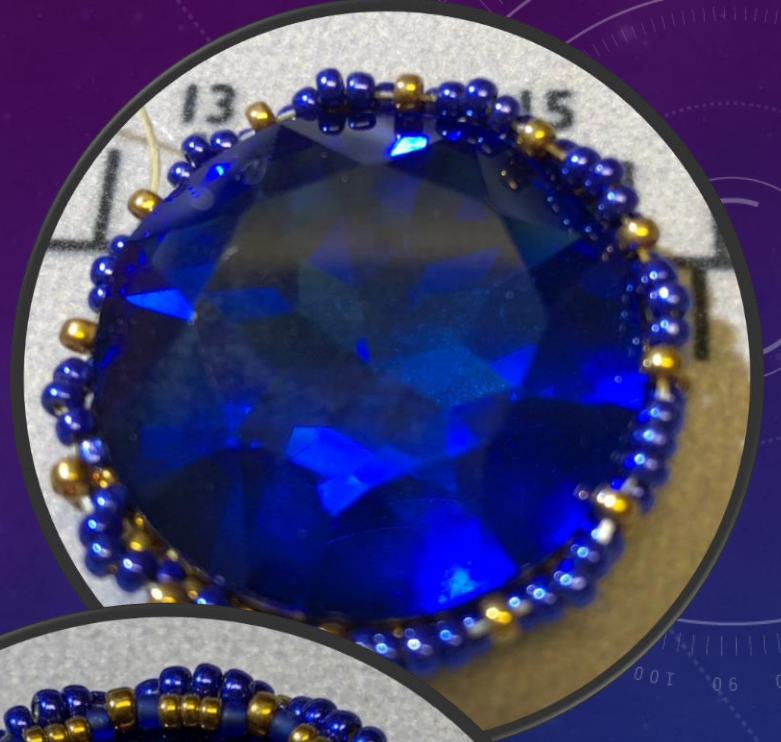
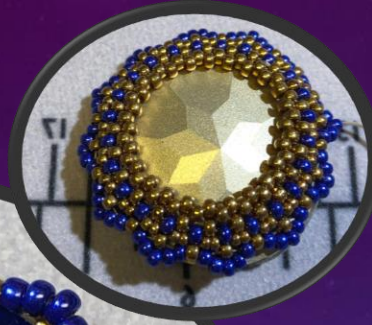
Add 15s to the other side to encase the stone





- Fill in back to prevent scratching of the stone



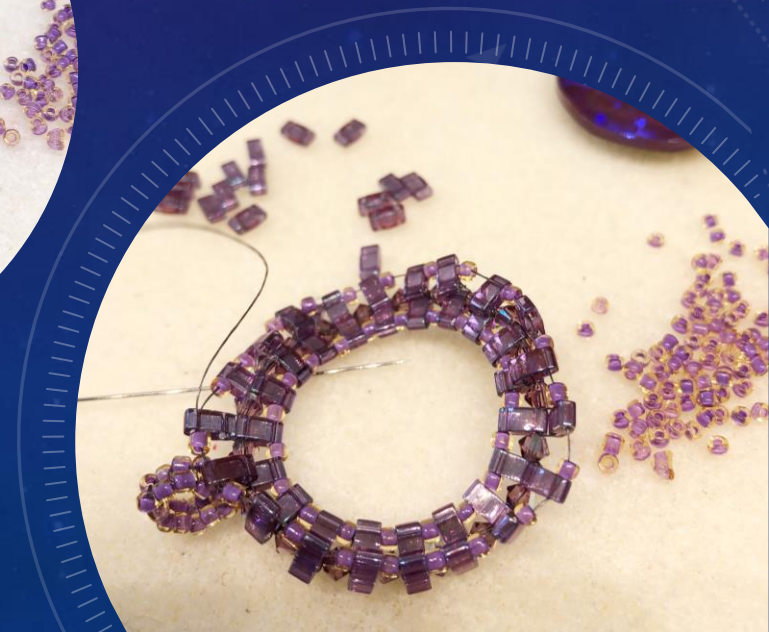


PEYOTE/PICOT



© Parameshi
Necklace

QUARTER TILAS AND
CRYSTALS JOINED IN A
CIRCLE. ANOTHER ROW
OF QUARTER TILAS IS
ADDED, THE STONE IS
INSERTED AND
SECURED

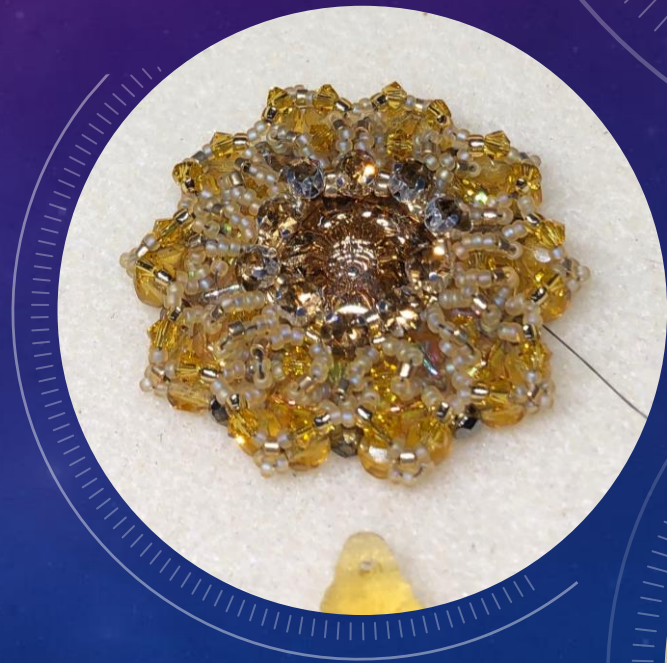




FAST, EASY, CUTE!!!

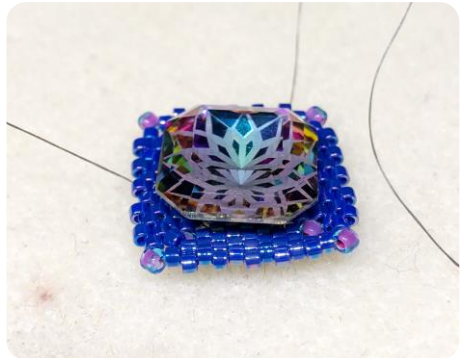
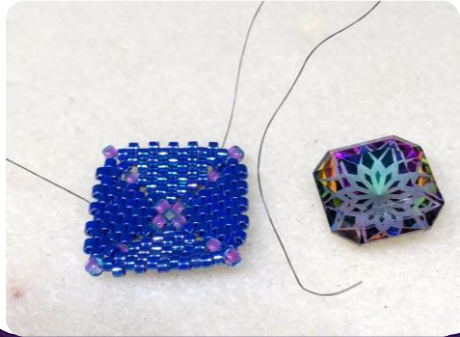


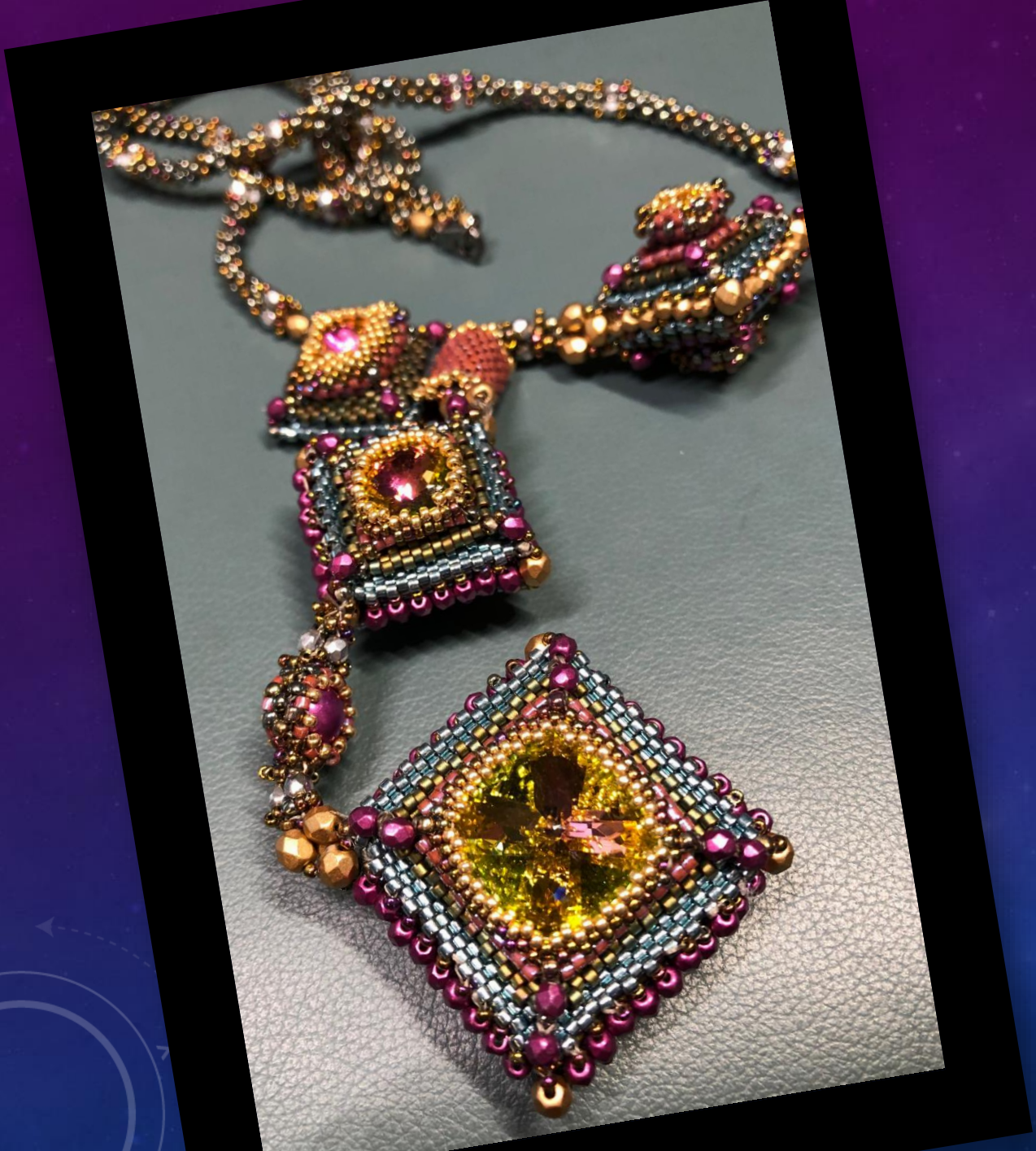
- ❖ Circle of beads embellished
- ❖ Rivoli inserted
- ❖ Another row of stones sewed on top to encase the rivoli





BOTTOM UP

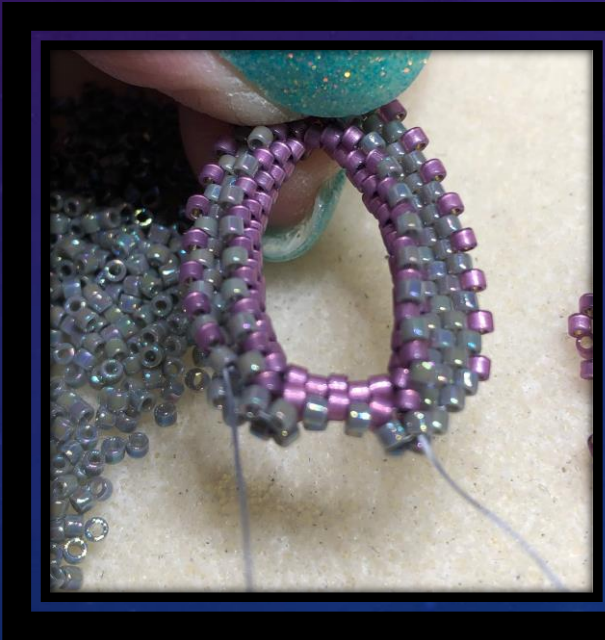




SANDWICH BEZEL













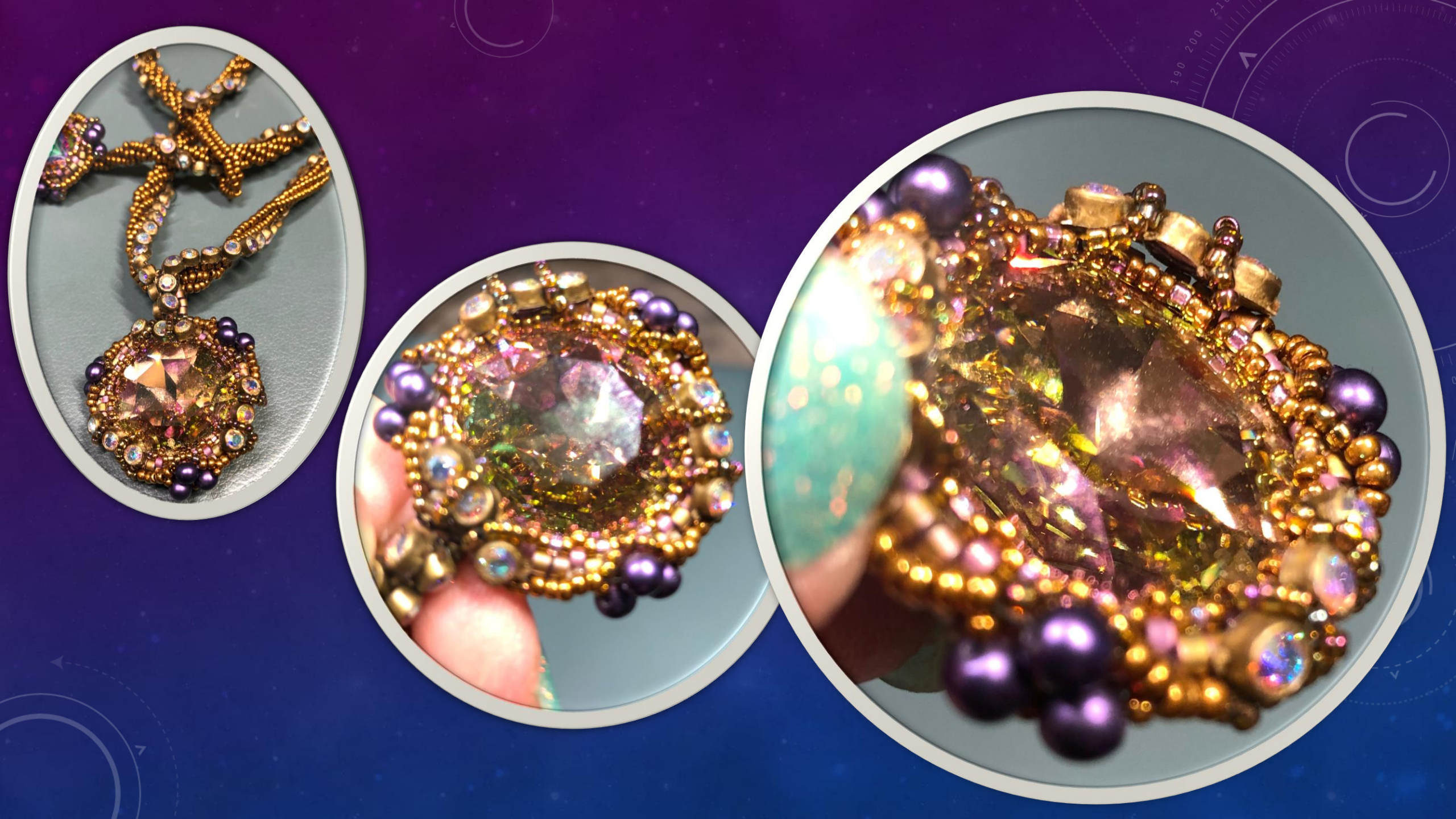


CAPTURED RIVOLI

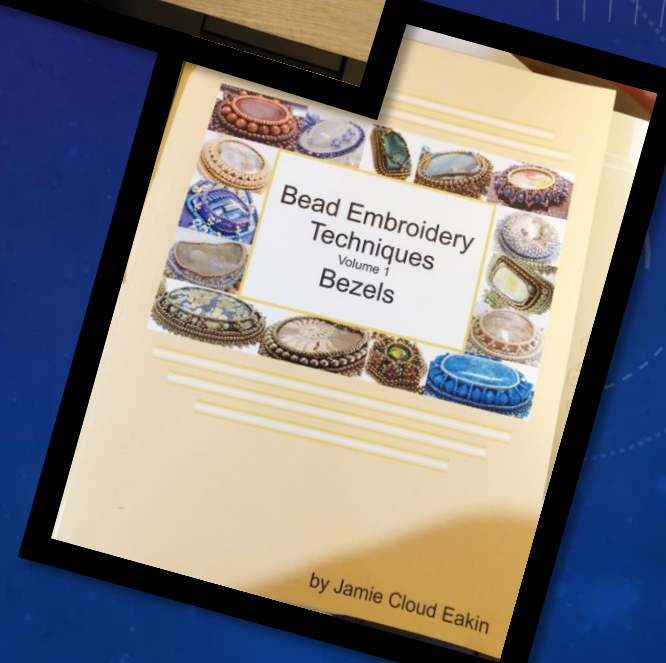
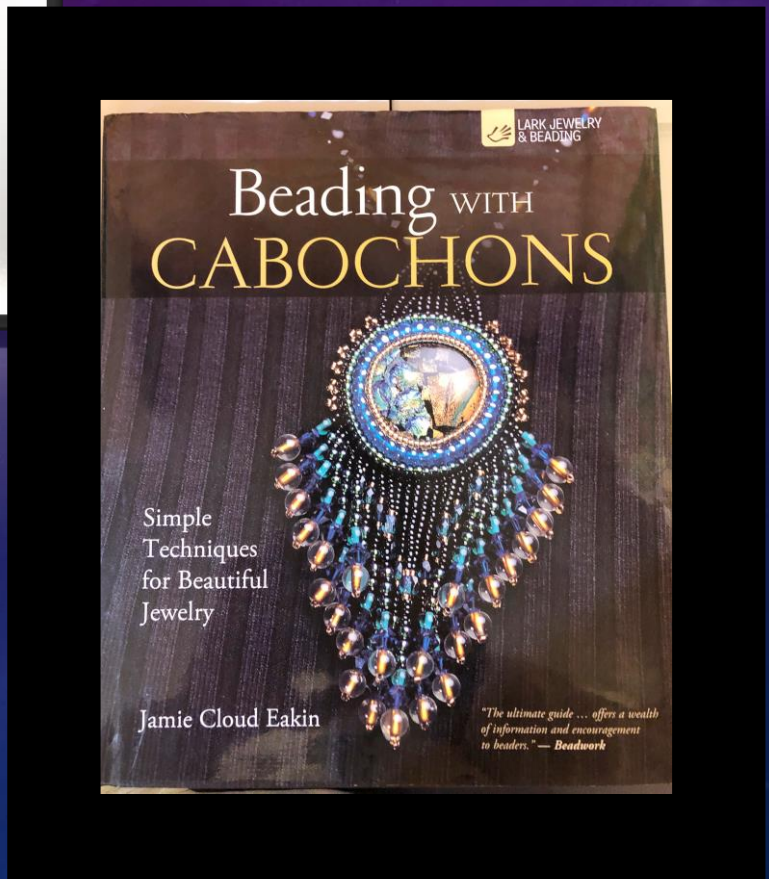
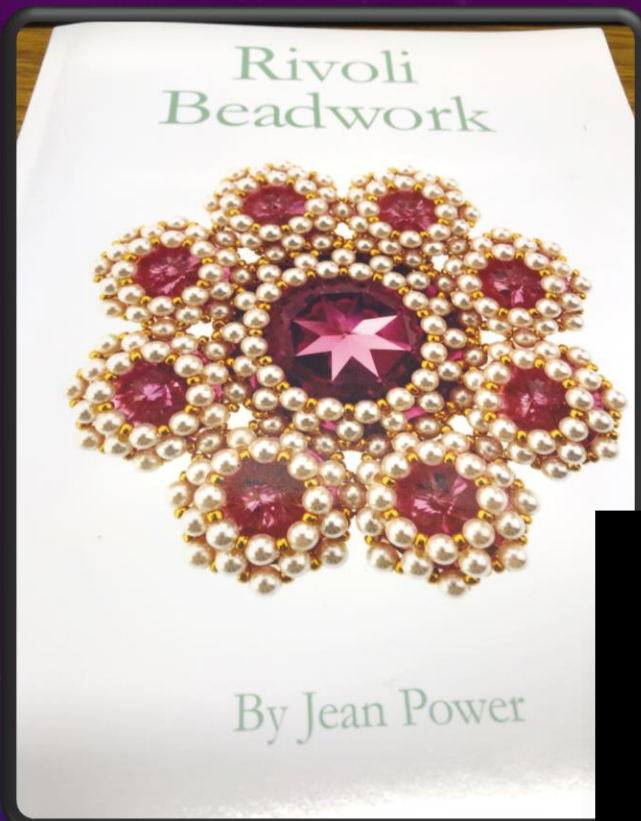


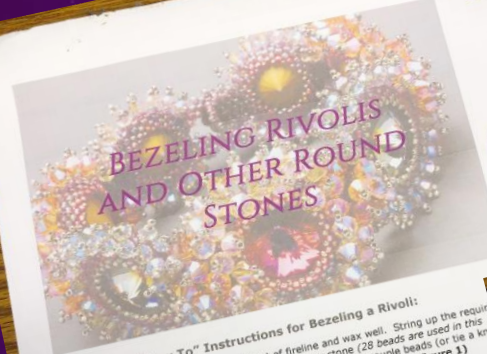






SOOOO MANY RESOURCES





BEZELING RIVOLIS AND OTHER ROUND STONES

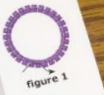


figure 1

Basic "How To" Instructions for Bezeling a Rivoli:
1. Thread up approximately 5 feet of fireline and wax well. String up the required number of cylinder beads for the size of your stone (28 beads are used in this example for a 47ss rivoli) and pass through the first couple beads (or tie a knot to create a circle. Leave approximately 6 inches of tail thread. (figure 1)

2. Peyote stitch one row of **Super8s**. At the end of the round, be sure to step up to the inside of the ring. (figure 2)

3. Peyote stitch one row (or more rows depending on the stone size) of **159s** being sure to pull in with each bead, creating a cupped bezel. At the end of the round, be sure to step up to the inside of the ring. (figure 3)

4. Peyote stitch one row of **159 Catch Charlottes**. At the end of the round, pass through the beads so that you are coming out one of the cylinder beads on the outside of the ring. (figure 4)

5. Place the rivoli stone in the bezel, right side up. While holding it in place, peyote stitch one row (or more rows depending on the stone size) of **159s** and one row of **159 Catch Charlottes**, pulling in with each row to hold the stone snugly in place. At the end of the charlotte round, half hitch once to secure everything in place. (figure 5)

For a chart which contains some of the more common stone sizes and the required cylinder and bead row counts, see the following page.
© 2020, Laura McCabe, all rights reserved
Illustrations by Laura McCabe, Illustrations by Melissa Grakowsky-Skipper

BEADWORK presents 8 favorite BEADED BEZEL projects



Bezel Rivoli 14mm With a Peyote stitch



© copyrights Hobbyland art Ltd

Build a Better Bezel



A versatile bezel technique using Super8s and seed beads

Traci Otte

8 More Beaded Bezel Jewelry Projects

USING PEYOTE STITCH,
BEAD EMBROIDERY, AND MORE

The Beaded Bezel Directory

And finally, here is the bezel directory I want to share with you. You may find that there are some sizes and dimensions of items you are making a beaded bezel for that are not included here. You can most likely figure out, based on the numbers below and the size of what you are bezeling, on how many beads to start with. If you do have some information to add, please share your secrets with us and we'll expand this directory!

BEZEL DIRECTORY USING 11/0 Miyuki Delica Beads

Shape	Dimensions	# of Delicas to Start
Round	10mm	26 Delicas
	12mm	32 Delicas
	13 mm	34 Delicas
	14mm	36 Delicas
	16 mm	42 Delicas
	17 mm	44 Delicas
	18 mm	46 Delicas
	23 mm	56 Delicas
	25 mm	62 Delicas
	27 mm	68 Delicas
30 mm	76 Delicas	